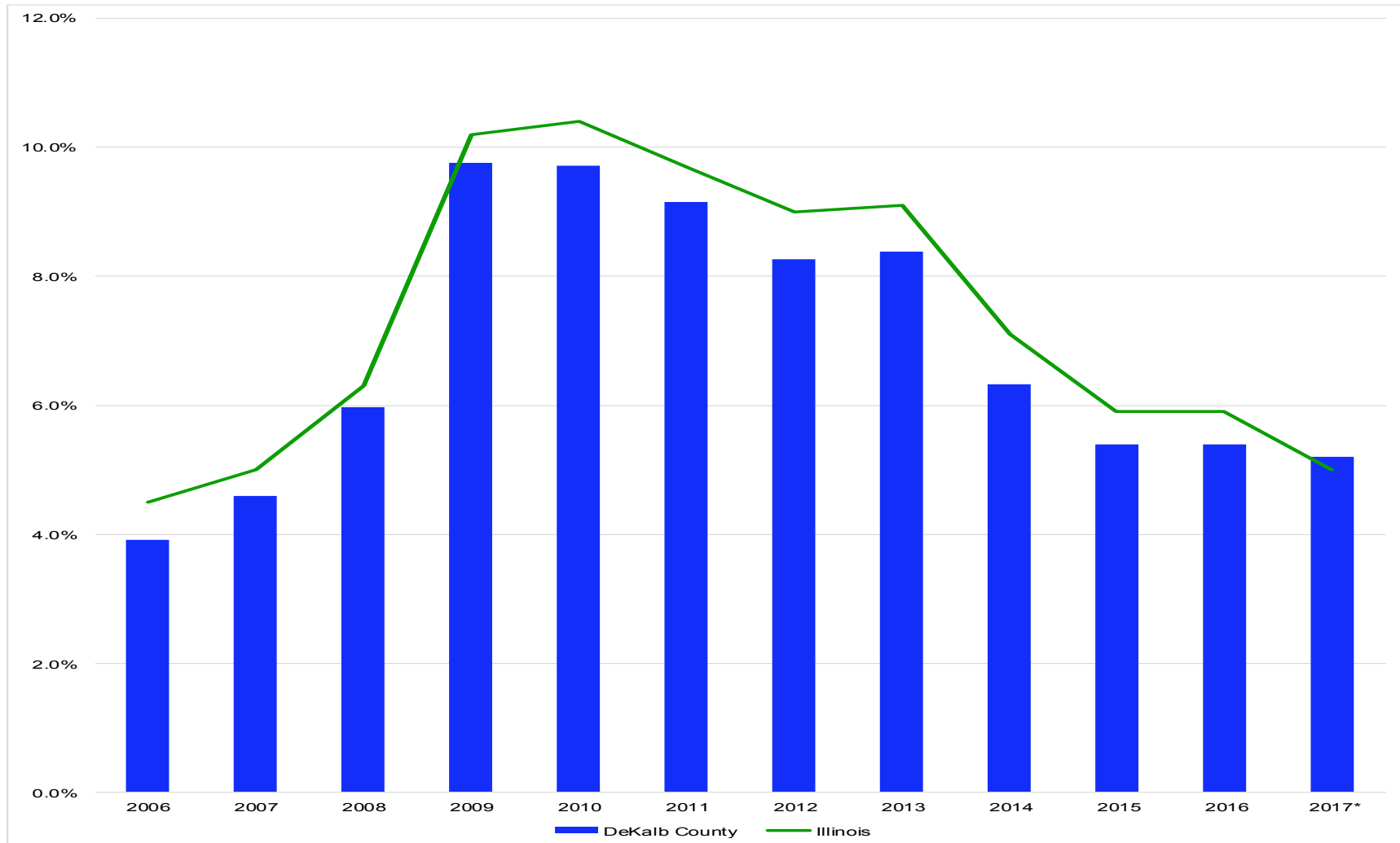


Unemployment

2017 Unemployment Data				
Month	Total Labor Force	# Employed	# Unemployed	Rate
July	54,798	52,241	2,557	4.7%
June	54,666	52,077	2,589	4.7%
May	53,766	51,431	2,335	4.3%
April	54,020	51,611	2,409	4.5%
March	54,591	51,693	2,898	5.3%
February	54,523	51,323	3,200	5.9%
January	54,808	50,859	3,949	7.2%
<i>2017 Average</i>	<i>54,453</i>	<i>51,605</i>	<i>2,848</i>	<i>5.2%</i>
2016 Unemployment Data				
Month	Total Labor Force	# Employed	# Unemployed	Rate
December	55,507	52,574	2,933	5.3%
November	56,418	53,816	2,602	4.6%
October	56,488	53,777	2,711	4.8%
September	56,155	53,324	2,831	5.0%
August	56,607	53,760	2,847	5.0%
July	57,029	54,137	2,892	5.1%
June	56,168	53,242	2,926	5.2%
May	55,915	52,943	2,972	5.3%
April	55,587	52,435	3,152	5.7%
March	55,744	52,153	3,591	6.4%
February	55,455	51,707	3,748	6.8%
January	55,518	51,561	3,957	7.1%
<i>2016 Average</i>	<i>56,049</i>	<i>52,952</i>	<i>3,097</i>	<i>5.5%</i>
2015 Unemployment Data				
December	55,968	52,756	3,212	5.7%
November	56,946	53,569	3,377	5.9%
October	56,488	53,499	2,989	5.3%
September	55,919	53,227	2,692	4.8%
August	55,777	52,935	2,842	5.1%
July	56,466	53,408	3,058	5.4%
June	55,644	52,881	2,763	5.0%
May	54,721	52,126	2,595	4.7%
April	53,715	51,236	2,479	4.6%
March	53,429	50,454	2,975	5.6%
February	53,512	50,353	3,159	5.9%
January	53,390	49,988	3,402	6.4%
<i>2015 Average</i>	<i>55,165</i>	<i>52,203</i>	<i>2,962</i>	<i>5.4%</i>

Source: IDES, Economic Information & Analysis Division.

Ten Year Unemployment Rates



Source: IDES, Local Area Unemployment Statistics, Historical Monthly Data. *Indicates year-to-date.